

How fresh is the fish?  
Histamine analysis with LCTech



# Analysis of Histamines

## From Quick Test to HPLC

In perishable foodstuff the concentration of histamine is an **indicator for freshness and ultimately for quality.**

The consumption of histamine-containing food can lead to **serious poisoning.** This is why **quick and reliable controls are necessary.**

LCTech offers a broad range of **reliable and inexpensive tools for histamine detection in both food and feed.**

- ✓ **HistaSTICK**, In-Situ Quick Test
- ✓ **HistaQUICK**, Quick Test for Fish Meal
- ✓ **HistaREAD ELISA Kit** for Food
- ✓ **PINNACLE PCX System** and relevant application kit for the quantitative analysis of biogenic amines with HPLC and post-column derivatization

## In Case You Need an Immediate Result On-Site:

### HistaSTICK, In-Situ Quick Test

The unique dipsticks enable the testing of fish and wine samples for elevated histamine concentration directly **on-site in about 15 minutes**.

The kit contains items needed for the **preparation and processing of 24 samples**.

The **cut-off** is set to 50 ppm for fish and to 2 ppm for wine samples, but **can be adjusted anytime by simple pre-dilution**.

Simply examine the dipstick under blue light and gain an instant test result. **There is no easier way to decide whether the sample meets your quality demands or not.**

- Very fast, distinct result in situ
- Cleaned-up extract can also be used for the HistaREAD ELISA kit
- AOAC approval in preparation



HistaSTICK, Histamine In-Situ Quick Test

#### Example:

The cut-off for a fish sample is set to 50 ppm.



If the dipstick shows the control band and specific band for the sample under blue light, the histamine concentration is below the cut-off. **The fish sample passes the test.**



If the dipstick only shows the control band under blue light, the histamine concentration is above the cut-off. **The fish sample does not pass the test.**

**Further investigation is needed, e.g. with the HistaREAD ELISA Kit or via post-column derivatization with the PINNACLE PCX system.**

## Special Application: Rapid Test for Fish Meal

### HistaQUICK Fish Meal

Should you need to perform a **reliable quality test for fish meal** very quickly, then the rapid test HistaQUICK is the right choice for you.

**In less than 15 minutes** the colorimetric test provides a quantitative result of how much histamine was detected in the sample. **The detection limit is as low as 125 ppm.**

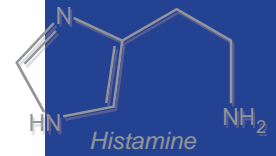
The kit contains **enough reagents to examine 48 fish meal samples**.



Fish Meal: A Special Type of Application for HistaQUICK

- Very fast, precise results
- Only 2 g fish meal are needed
- Requires no special instrumentation
- Easy sample preparation

## Rest Assured: Confirmation in No Time



### HistaREAD ELISA Kit

Using the competitive enzyme immunoassay kit HistaREAD, it is possible to **detect histamine in a range of foods such as cheese, milk, wine, champagne, ... as well as in fish meal.**

Sample preparation and test procedure are **easily done in about 70 minutes.** The final result is determined by a simple calibration curve of the standards.

The kit contains enough material **to process 96 samples in total.** The **detection limit is as low as 0.15 µg/L.**



HistaREAD ELISA kit

- ✓ Very reliable result within a short time
- ✓ Easy to handle
- ✓ High correlation with HPLC results
- ✓ Successful in proficiency tests
- ✓ AOAC approval in preparation

## HPLC and Post-Column Derivatization Comprehensive Analysis of Biogenic Amines

### PINNACLE PCX System for Post-Column Derivatization

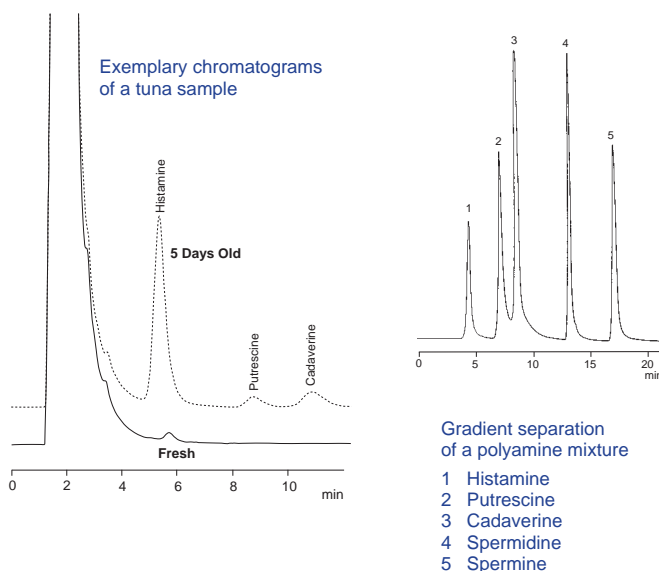
The PINNACLE PCX and the relevant application kit, combined with a suitable HPLC system, provides a complete method for biogenic amines (including histamine) with application guarantee.

By post-column derivatization the amines become visible for fluorescence detection. Thus, **biogenic amines can be reliably detected** in food and beverages.

We would be pleased to advise you in detail any time. The comprehensive method is available on request.



PINNACLE PCX,  
Post-Column Derivatization System



- ✓ Noise-free base line
- ✓ Robust, long life system
- ✓ Control via software
- ✓ Works with any HPLC system
- ✓ Easy sample preparation
- ✓ Easy to handle



LCTech GmbH  
 Bahnweg 41  
 84405 Dorfen, Germany  
 Tel. +49 (0)8081 / 9368-0  
 Fax +49 (0)8081 / 9368-10  
 info@Lctech.de  
 www.Lctech.de

And a distributor nearby:

**MD Scientific**  
 authorized distributor in Denmark  
[www.md-scientific.dk](http://www.md-scientific.dk)

**Ordering Information**

Product number	Description
11758	<b>HistaSTICK, 24 samples</b>
11755	<b>HistaQUICK Fish Meal, 48 samples</b>
11754	<b>HistaREAD ELISA Kit, 96 samples</b>
<b>For the comprehensive analysis of biogenic amines:</b>	
1153-1012	<b>PINNACLE PCX</b> , System for post-column derivatization, 1 pump, reactor size 0.15 µL 240 V, 110 V on request
0352-0040	<b>Application kit for biogenic amines</b> , contains HPLC column, pre-column, restrictor, eluents, regenerants and derivatization reagents.

**SOLUTIONS BY**