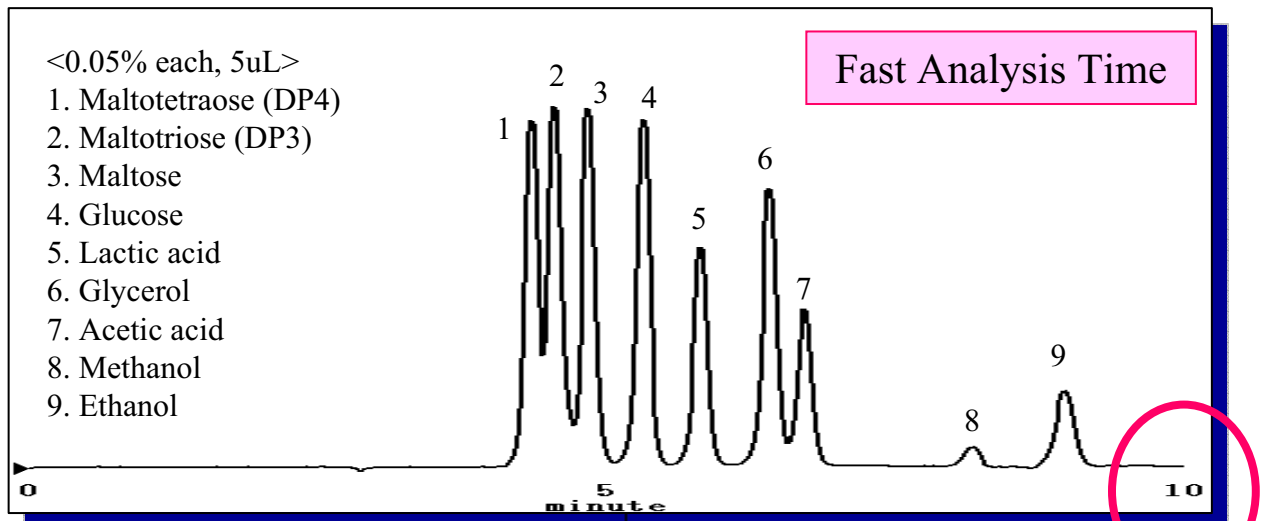
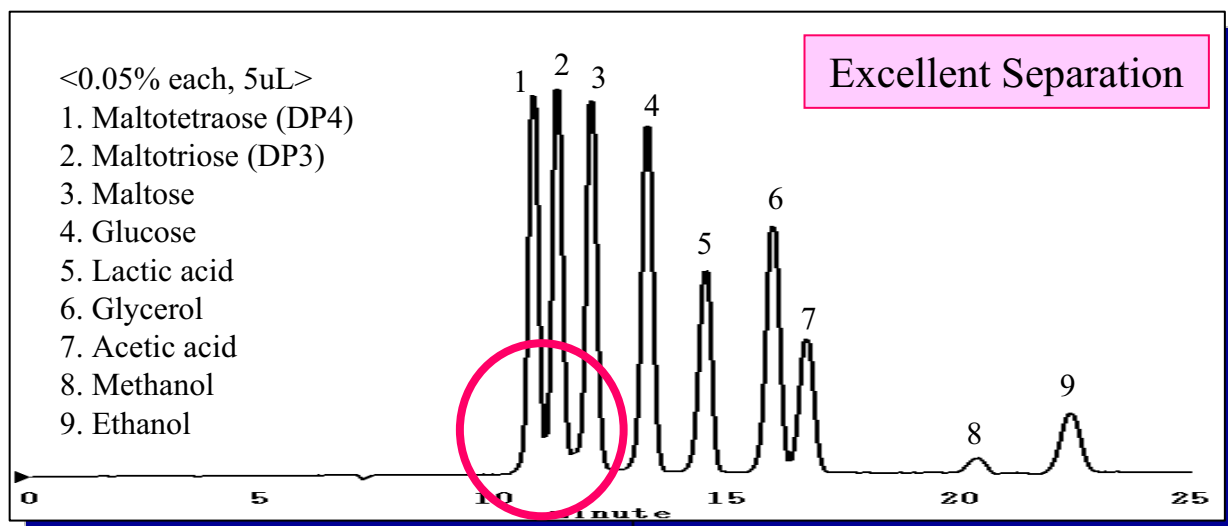


Ethanol Production Monitoring by HPLC

- Production Monitoring
- Quality Control
- Organic Acid and Impurity Analyses



Column : Shodex **SUGAR SH1821** (8.0mmID X 300mm)
Eluent : 0.5 mM H₂SO₄ aq.
Flow rate : 1.5 mL/min
Detector : Shodex RI-101
Column temp. : 75 °C



Column : Shodex **SUGAR SH1821** (8.0mmID X 300mm)
Eluent : 0.5 mM H₂SO₄ aq.
Flow rate : 0.6 mL/min
Detector : Shodex RI-101
Column temp. : 75 °C



Shodex HPLC Column Selection Guide

Analytes	Recommended columns	Features
Monosaccharide	Asahipak NH2P-50	normal phase, CH ₃ CN/H ₂ O
	SUGAR SP0810	ligand exchange mode, H ₂ O
Oligosaccharide	Asahipak NH2P-50	normal phase, CH ₃ CN/H ₂ O gradient and isocratic
	SUGAR KS-802	size exclusion, H ₂ O
Saccharide and alcohol	SUGAR KS-802	size exclusion, H ₂ O
	SUGAR SC1011	ligand exchange, H ₂ O
Saccharide, organic acid, alcohol	SUGAR SH1821	size and ion exclusion, H ₂ O, dilute acid
Polysaccharides	GPC KF-800, KD-800, LF-804	size exclusion (THF, DMF)
	SB-800HQ,	size exclusion (H ₂ O, buffer)
Metal Impurities	IC YS-50	Ion Chromatography, diluted acid
Glycerol palmitate, Glycerides	GF-310HQ	Multimode, HF
Fatty acid methyl esters	RSpak DS-413	CH ₃ CN/THF/H ₂ O=45/30/25
Acetic acid, Propionic acid and Formic acid	IC SI-52 4E	Ion Chromatography, Na ₂ CO ₃ aq.

Sugar SH series HPLC Column Specifications

Products		Counter Ion	Exclusion Limit (Pullulan)	particle (µm)	TPN (per column)	I.D. x L (mm)
F6378100	Sugar SH1011	Sulfo(H ⁺)	1,000	6	≥ 17,000	8.0 x 300
F6378101	Sugar SH1821	Sulfo(H ⁺)	10,000	6	≥ 17,000	8.0 x 300
F6700080	Sugar SH-G	Sulfo(H ⁺)	-	10	Guard column	6.0 x 50

For price quotes and technical information, please contact Shodex or a distributor near you



MD Scientific is authorised distributor in Denmark for Shodex
www.md-scientific.dk - 7027 8565 - info@md-scientific.dk