

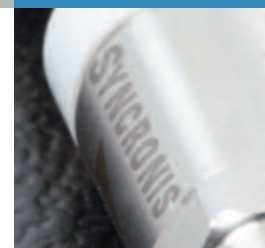
Thermo Scientific Synchronis Amino HPLC Columns

Consistent, predictable separations,
Column after column, time after time

- Outstanding reproducibility for reversed phase, normal phase, ion exchange and HILIC
- Highly pure, high surface area silica
- Alternative selectivity to C18
- Double endcapped for extra surface coverage
- Rigorously tested to ensure quality

Specifications

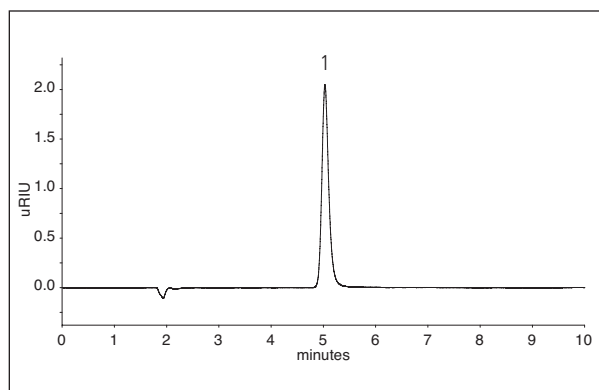
| | | | |
|----------------------|-------------------------------------|---------------------------|-----|
| Particle size | 1.7 μm , 5 μm | Carbon load | 4 % |
| Pore size | 100 Å | Endcapped | Yes |
| Surface area | 320 m ² /g | USP classification | L8 |
| pH range | 2 - 8 | | |



Versatile amino phase

Synchronis™ Amino columns are extremely versatile and deliver excellent chromatography in four modes. They can be used with common buffers and an organic modifier as a weak ion exchange material for the analysis of anions and organic acids. When used as a normal phase material, Synchronis Amino offers an alternative selectivity to silica and excels for carbohydrate analysis when used in reversed phase or HILIC mode.

Application: Lactulose



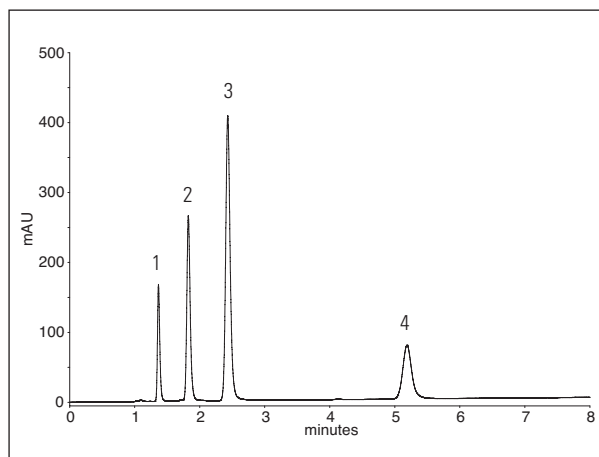
Column: Synchronis Amino 5 μm , 150mm x 4.6mm

| | |
|-------------------|---------------------|
| Mobile phase: | Water: MeCN (30:70) |
| Flow rate: | 1.0 mL/min |
| Temperature: | 35°C |
| Detection: | RI |
| Injection volume: | 5 μL |

1. Lactulose

| Description | Particle size | Length (mm) | 2.1 mm ID | 3 mm ID | 4 mm ID | 4.6 mm ID |
|---------------------------------|---------------|-------------|--------------|--------------|--------------|--------------|
| Synchronis Amino | 1.7 µm | 30 | 97702-032130 | – | – | – |
| | | 50 | 97702-052130 | 97702-053030 | – | 97702-054630 |
| | | 100 | 97702-102130 | 97702-103030 | – | – |
| | 5 µm | 30 | 97705-032130 | 97705-033030 | 97705-034030 | 97705-034630 |
| | | 50 | 97705-052130 | 97705-053030 | 97705-054030 | 97705-054630 |
| | | 100 | 97705-102130 | 97705-103030 | 97705-104030 | 97705-104630 |
| Drop-in guard cartridges (4/pk) | 5 µm | 10 | 97705-012101 | 97705-013001 | 97705-014001 | – |

Ion exchange retention and selectivity



Column: Synchronis Amino, 5µm, 150mm x 4.6mm

Mobile phase: 50 mM Phosphate (pH 3.0)
 Flow rate: 1.0 mL/min
 Temperature: 40°C
 Detection: 254 nm
 Injection volume: 10 µL

1. Uracil
2. Cytidine monophosphate
3. Adenosine monophosphate
4. Guanosine monophosphate

Consistent, predictable separations, Column after column, time after time

Synchronis HPLC columns are manufactured, packed and tested in ISO9000 accredited facilities. Each lot of silica is tested for the physical properties of the silica support and only released for production if it meets the stringent test specifications.

Each bonded lot of chromatographic packing material is rigorously tested for primary and secondary interactions with the bonded phase.

New, enhanced, automated packing methods drive consistency even further and every column is individually tested to ensure that it meets the required quality.

These extensive testing and quality control procedures ensure the delivery of a consistent product, column after column.

For more information, visit www.thermoscientific.com/Synchronis

©2010 Thermo Fisher Scientific Inc. All rights reserved. All trademarks are the property of Thermo Fisher Scientific Inc. and its subsidiaries. Specifications, terms and pricing are subject to change. Not all products are available in all countries. Please consult your local sales representative for details.

SSCCSYNCRONISAMINO 0810

USA and Canada +1 800 332 3331
France +33 (0) 3 88 67 53 20
Germany +49 6103 408 0
Switzerland +41 56 618 41 11
United Kingdom +44 (0) 1928 534 110
Japan +81 45 453 9220
China +86-21-68654588 or +86-10-84193588
India 1800 22 8374 (toll-free)
 +91 22 6716 2200
All Other Enquiries +44 (0) 1928 534 050


 authorized distributor in Denmark
www.md-scientific.dk

Thermo
 SCIENTIFIC