

Toyopearl GigaCap® CM-650M

For high capacity cation exchange chromatography of IgG

TOYOPEARL
PRODUCT OVERVIEW

Introduction

Toyopearl GigaCap CM-650M is the 2nd cation exchange resin* in the Toyopearl GigaCap family, optimized for high throughput purification of IgG. Its base bead is Toyopearl HW-65C which has a particle size range of 50-100µm. This particle size range has outstanding pressure flow characteristics for high throughput IgG purification (figure 1).

*specifically for packed bed use

Product Highlights

High Dynamic Binding Capacity Table 1 and Figure 2

- Typical dynamic binding capacity of 100mg/mL resin
- Minimum of 110mg/mL resin static capacity (CofA)

Unique Selectivity Figure 3

- Weak cation exchange resin with different elution profile than Toyopearl GigaCap S-650M
- Can be useful for both mAb and traditional protein purification
- More tolerant of feedstock conductivities. May show better capacity than Toyopearl GigaCap S-650M in some cases even though absolute capacity is somewhat lower.

Improved fluid dynamics over agarose materials

- Can be used at backpressures up to 3 bar
- Better kinetics and more theoretical plates with its slightly smaller particle size relative to traditional agarose products

Figure 1. Toyopearl GigaCap CM-650M has good pressure flow properties

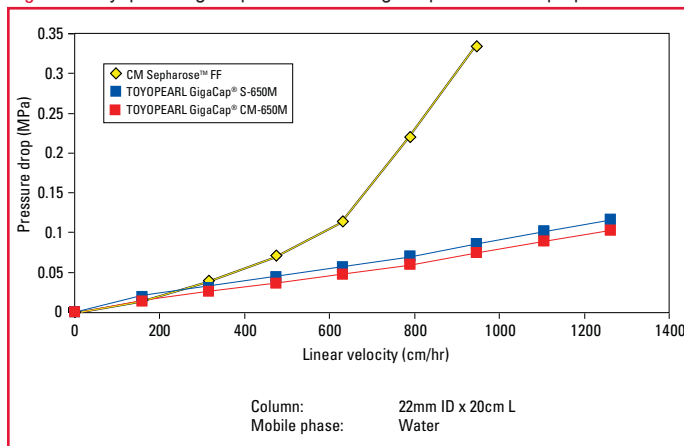


Figure 2. Toyopearl GigaCap CM-650M breakthrough curve

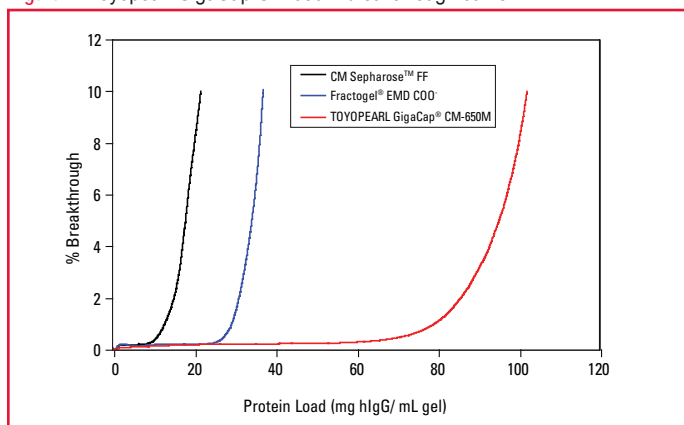


Table 1. Toyopearl GigaCap CM-650M properties

Ion exchanger	Particle size (µm)	Ion exchange capacity (meq/mL resin)	Dynamic binding capacity (mg/mL gel)	Recovery (%)
TOYOPEARL GigaCap CM-650M	50 - 100	0.17-0.28	100	98
CM Sepharose Fast Flow	45 - 165	0.09-0.13	22	93
Fractogel EMD C00 (M)	40 - 90	-	37	97
Toyopearl GigaCap S-650M	50 - 100	0.1-0.2	145	98

Conditions:

Dynamic binding capacities were determined at 10% breakthrough. Column size: 6 mm I.D. x 40mm height

Sample: polyclonal human IgG (1mg/mL), Loading buffer 0.1mol/L acetate buffer (pH 4.7)

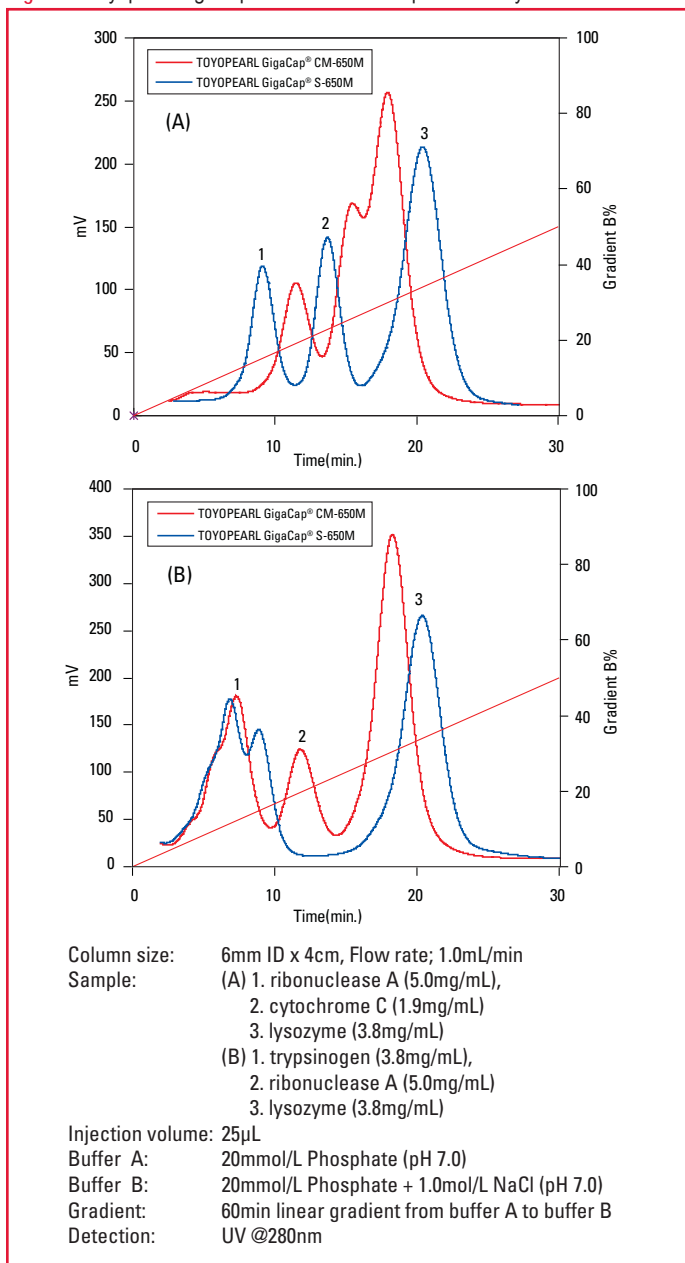
Elution buffer: 0.1mol/L acetate buffer (pH 4.7) + 1.0mol/L NaCl, Linear velocity: 212cm/hr. Detection: UV @ 280nm



TOSOH BIOSCIENCE

TOSOH

Figure 3. Toyopearl GigaCap CM-650M has unique selectivity



Ordering Information

Part #	Description	Volume
21946	Toyopearl GigaCap CM-650M	100mL
21947	Toyopearl GigaCap CM-650M	250mL
21948	Toyopearl GigaCap CM-650M	1L
21949	Toyopearl GigaCap CM-650M	5L
21950	Toyopearl GigaCap CM-650M	50L
21951	ToyoScreen GigaCap CM-650M	1mL x 6
21952	ToyoScreen GigaCap CM-650M	5mL x 6

Toyopearl and Toyopearl GigaCap are registered trademarks of the Tosoh Corporation.
 Sepharose is a trademark of GE Healthcare Bio-Sciences.
 Fractogel is a registered trademark of Merck KGaA.



TOSOH

TOSOH BIOSCIENCE

Denmark
MD Scientific is authorized distributor in
Denmark for Tosoh Bioscience
www.md-scientific.dk - info@md-scientific.dk - Tel. 7027 8565