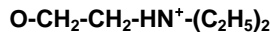


# Toyopearl® DEAE-650 Resins

(weak anion exchange chromatography resins)


**HW-65**
**Part Numbers:**

19804	Toyopearl DEAE-650S, 35µm, 25mL	21360	ToyoScreen DEAE-650M, 1mL x 6 ea.
07472	Toyopearl DEAE-650S, 35µm, 250mL	21361	ToyoScreen DEAE-650M, 5mL x 6 ea.
14692	Toyopearl DEAE-650S, 35µm, 1L	21392	ToyoScreen IEC Anion Mix Pack, 1mL x 3 grades x 2 ea. (DEAE, SuperQ, QAE)
07973	Toyopearl DEAE-650S, 35µm, 5L	21393	ToyoScreen IEC Anion Mix Pack, 5mL x 3 grades x 2 ea. (DEAE, SuperQ, QAE)
21483	Toyopearl DEAE-650S, 35µm, 50L	21396	ToyoScreen IEC Mix Pack, 1mL x 6 grades x 1 ea. (DEAE, SuperQ, QAE, CM, SP650, SP-550)
43201	Toyopearl DEAE-650M, 65µm, 100mL	21397	ToyoScreen IEC Mix Pack, 5mL x 6 grades x 1 ea. (DEAE, SuperQ, QAE, CM, SP650, SP-550)
07473	Toyopearl DEAE-650M, 65µm, 250mL	21400	ToyoScreen Column Holder
14693	Toyopearl DEAE-650M, 65µm, 1L	42194	ToyoScreen Column Holder with fittings
07974	Toyopearl DEAE-650M, 65µm, 5L		
18367	Toyopearl DEAE-650M, 65µm, 50L		
07988	Toyopearl DEAE-650C, 100µm, 250mL		
14694	Toyopearl DEAE-650C, 100µm, 1L		
07989	Toyopearl DEAE-650C, 100µm, 5L		

**Product Description**

Toyopearl chromatographic resins are comprised of a methacrylic polymer incorporating high mechanical and chemical stability. Resins are available as non-functionalized "HW" series resins for size exclusion separations, and derivatized with surface chemistries for alternative modes of chromatography such as ion exchange, hydrophobic interaction or affinity separations.

Toyopearl DEAE-650 chromatographic resins are designed for anion exchange chromatography. This chromatographic mode separates molecules on the basis of ionic interactions between the sample and the resin. The separation is usually accomplished in buffered aqueous solution with a gradient of increasing ionic strength. Alternatively, pH adjustment may be used for control of elution.

**Formulation**

72% (v/v) slurry in 20% (v/v) ethanol

This sheet contains the suggested operating conditions and specification ranges for Toyopearl DEAE-650 resins. Lot-specific specifications are included in the Certificate of Analysis (C of A) shipped with the product.

**A. OPERATING CONDITIONS**

Pressure Drop Across the Column	max. 3 bar (recommended)
Operating Linear Flow Rate	normally 10 – 600 cm/hour (depending on particle size)
Cleaning in Place/Sanitization	0.5mol/L NaOH or 0.1mol/L HCl
Long Term Storage Conditions	20% (v/v) ethanol (shipping solvent)

**B. SPECIFICATIONS**

Appearance	White resin slurry which settles upon standing
Particle Size Distribution (>80% within range)	20 – 50µm for S-grade 40 – 90µm for M-grade 50 – 150µm for C-grade
Mean Pore Diameter	1000Å
Exclusion Limit (base resin)	5 x 10 <sup>6</sup> Dalton (globular protein)
Ion Exchange Capacity	0.10 ± 0.02 meq/mL for S- and M-grades 0.08 ± 0.03 meq/mL for C-grade
Protein Adsorption Capacity	30 ± 5 mg/mL (Bovine Serum Albumin)
Bacterial Count	≤ 100 CFU/mL
Endotoxin Concentration	≤ 10.0 endotoxin units/mL
Resin Volume per Container	The indicated volume is the settled resin volume.
Foreign Substance	not observed, no visual evidence
Eluable Matter	≤ 0.2%
Shelf Life Stability	Minimum 10 years

RDS1010\_MAY2009

**Denmark**

MD Scientific is authorized distributor in  
Denmark for Tosoh Bioscience  
www.md-scientific.dk - info@md-scientific.dk - Tel. 7027 8565

www.tosohbioscience.com

**Tosoh Bioscience GmbH**

Zettachring 6  
D-70567 Stuttgart  
Germany  
Phone: 0711/13257 0