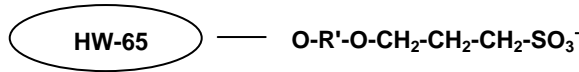


Toyopearl® MegaCap II SP-550 Resins

(strong cation exchange chromatography resins)

**Part Numbers:**

21804	Toyopearl MegaCap II SP-550EC, 35µm, 100mL	21870	ToyoScreen MegaCap II SP-550EC, 1mL x 6 ea.
21805	Toyopearl MegaCap II SP-550EC, 35µm, 250mL	21871	ToyoScreen MegaCap II SP-550EC, 5mL x 6 ea.
21806	Toyopearl MegaCap II SP-550EC, 200µm, 1L	21400	ToyoScreen Column Holder
21807	Toyopearl MegaCap II SP-550EC, 200µm, 5L	42194	ToyoScreen Column Holder with fittings
21808	Toyopearl MegaCap II SP-550EC, 200µm, 50L		

Product Description

Toyopearl chromatographic resins are comprised of a methacrylic polymer incorporating high mechanical and chemical stability. Resins are available as non-functionalized "HW" series resins for size exclusion separations, and derivatized with surface chemistries for alternative modes of chromatography such as ion exchange, hydrophobic interaction or affinity separations.

Toyopearl MegaCap II SP-550 chromatographic resins are designed for cation exchange chromatography of peptides and small proteins. This chromatographic mode separates molecules on the basis of ionic interactions between the sample and the resin. The separation is usually accomplished in buffered aqueous solution with a gradient of increasing ionic strength. Alternatively, pH adjustment may be used for control of elution.

Formulation

72% (v/v) slurry in 20% (v/v) ethanol

This sheet contains the suggested operating conditions and specification ranges for Toyopearl MegaCap II SP-550 resins. Lot-specific specifications are included in the Certificate of Analysis (C of A) shipped with the product.

A. OPERATING CONDITIONS

Pressure Drop Across the Column	max. 3 bar (recommended)
Operating Linear Flow Rate	normally 10 – 3000 cm/hour (depending on particle size)
Cleaning in Place/Sanitization	0.5mol/L NaOH or 0.1mol/L HCl
Long Term Storage Conditions	20% (v/v) ethanol (shipping solvent)

B. SPECIFICATIONS

Appearance	White resin slurry which settles upon standing
Particle Size Distribution (>80% within range)	100 – 300µm for EC-grade
Mean Pore Diameter	500Å
Ion Exchange Capacity	0.15 ± 0.05 meq/mL
Protein Adsorption Capacity	127.5 ± 27.5 mg/mL (Insulin)
Bacterial Count	≤ 100 CFU/mL
Endotoxin Concentration	≤ 10.0 endotoxin units/mL
Resin Volume per Container	The indicated volume is the settled resin volume.
Foreign Substance	not observed, no visual evidence
Eluable Matter	≤ 0.2%
Shelf Life Stability	Estimated minimum 10 years

RDS1050_MAY2009

Denmark

MD Scientific is authorized distributor in
Denmark for Tosoh Bioscience

www.md-scientific.dk - info@md-scientific.dk - Tel. 7027 8565

www.tosohbioscience.com

Tosoh Bioscience GmbH

Zettachring 6
D-70567 Stuttgart
Germany
Phone: 0711/13257 0