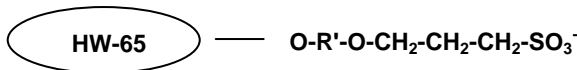


Toyopearl® SP-650 Resins

(strong cation exchange chromatography resins)



Part Numbers:	19822 Toyopearl SP-650S, 65µm, 25mL	21368 ToyoScreen SP-650M, 1mL x 6 ea.
	08437 Toyopearl SP-650S, 65µm, 250mL	21369 ToyoScreen SP-650M, 5mL x 6 ea.
	14698 Toyopearl SP-650S, 65µm, 1L	21394 ToyoScreen IEC Cation Mix Pack, 1mL x 3 grades x 2 ea. (CM, SP-650, SP-550)
	08438 Toyopearl SP-650S, 65µm, 5L	
	21477 Toyopearl SP-650S, 65µm, 50L	21395 ToyoScreen IEC Cation Mix Pack, 5mL x 3 grades x 2 ea. (CM, SP-650, SP-550)
	43202 Toyopearl SP-650M, 65µm, 100mL	
	07997 Toyopearl SP-650M, 65µm, 250mL	21396 ToyoScreen IEC Mix Pack, 1mL x 6 grades x 1 ea. (DEAE, SuperQ, QAE, CM, SP-650, SP-550)
	14699 Toyopearl SP-650M, 65µm, 1L	
	07998 Toyopearl SP-650M, 65µm, 5L	21397 ToyoScreen IEC Mix Pack, 5mL x 6 grades x 1 ea. (DEAE, SuperQ, QAE, CM, SP-650, SP-550)
	18369 Toyopearl SP-650M, 65µm, 50L	
	07994 Toyopearl SP-650C, 100µm, 250mL	21400 ToyoScreen Column Holder
	14700 Toyopearl SP-650C, 100µm, 1L	42194 ToyoScreen Column Holder with fittings
	07995 Toyopearl SP-650C, 100µm, 5L	

Product Description

Toyopearl chromatographic resins are comprised of a methacrylic polymer incorporating high mechanical and chemical stability. Resins are available as non-functionalized "HW" series resins for size exclusion separations, and derivatized with surface chemistries for alternative modes of chromatography such as ion exchange, hydrophobic interaction or affinity separations.

Toyopearl SP-650 chromatographic resins are designed for cation exchange chromatography. This chromatographic mode separates molecules on the basis of ionic interactions between the sample and the resin. The separation is usually accomplished in buffered aqueous solution with a gradient of increasing ionic strength. Alternatively, pH adjustment may be used for control of elution.

Formulation

72% (v/v) slurry in 20% (v/v) ethanol

This sheet contains the suggested operating conditions and specification ranges for Toyopearl SP-650 resins. Lot-specific specifications are included in the Certificate of Analysis (C of A) shipped with the product.

A. OPERATING CONDITIONS

Pressure Drop Across the Column	max. 3 bar (recommended)
Operating Linear Flow Rate	normally 10 – 600 cm/hour (depending on particle size)
Cleaning in Place/Sanitization	0.5mol/L NaOH or 0.1mol/L HCl
Long Term Storage Conditions	20% (v/v) ethanol (shipping solvent)

B. SPECIFICATIONS

Appearance	White resin slurry which settles upon standing
Particle Size Distribution (>80% within range)	20 – 50µm for S-grade 40 – 90µm for M-grade 50 – 150µm for C-grade
Mean Pore Diameter	1000Å
Exclusion Limit	5 x 10 ⁶ Dalton (globular protein)
Ion Exchange Capacity	0.15 ± 0.02 meq/mL for S- and M-grade 0.15 ± 0.03 meq/mL for C-grade
Protein Adsorption Capacity	50 ± 10 mg/mL (Lysozyme) for S- and M-grade 45 ± 10 mg/mL (Lysozyme) for C-grade
Bacterial Count	≤ 100 CFU/mL
Endotoxin Concentration	≤ 10.0 endotoxin units/mL
Resin Volume per Container	The indicated volume is the settled resin volume.
Foreign Substance	not observed, no visual evidence
Eluable Matter	≤ 0.2%
Shelf Life Stability	Minimum 10 years

RDS1080_MAY2009

Denmark

MD Scientific is authorized distributor in
Denmark for Tosoh Bioscience

www.md-scientific.dk - info@md-scientific.dk - Tel. 7027 8565

www.tosohbioscience.com

Tosoh Bioscience GmbH

Zettachring 6

D-70567 Stuttgart

Germany

Phone: 0711/13257 0