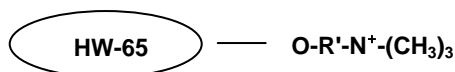


Toyopearl® SuperQ-650 Resins

(strong anion exchange chromatography resins)



Part Numbers:	19823 Toyopearl SuperQ-650S, 35µm, 25mL 17223 Toyopearl SuperQ-650S, 35µm, 250mL 17224 Toyopearl SuperQ-650S, 35µm, 1L 17225 Toyopearl SuperQ-650S, 35µm, 5L 19679 Toyopearl SuperQ-650S, 35µm, 50L 43205 Toyopearl SuperQ-650M, 65µm, 100mL 17227 Toyopearl SuperQ-650M, 65µm, 250mL 17228 Toyopearl SuperQ-650M, 65µm, 1L 17229 Toyopearl SuperQ-650M, 65µm, 5L 21311 Toyopearl SuperQ-650M, 65µm, 50L 43275 Toyopearl SuperQ-650C, 100µm, 100mL 17231 Toyopearl SuperQ-650C, 100µm, 250mL 17232 Toyopearl SuperQ-650C, 100µm, 1L 17233 Toyopearl SuperQ-650C, 100µm, 5L	21362 ToyoScreen SuperQ-650M, 1mL x 6 ea. 21363 ToyoScreen SuperQ-650M, 5mL x 6 ea. 21392 ToyoScreen IEC Anion Mix Pack, 1mL x 3 grades x 2 ea. (DEAE, SuperQ, QAE) 21393 ToyoScreen IEC Anion Mix Pack, 5mL x 3 grades x 2 ea. (DEAE, SuperQ, QAE) 21396 ToyoScreen IEC Mix Pack, 1mL x 6 grades x 1 ea. (DEAE, SuperQ, QAE, CM, SP650, SP-550) 21397 ToyoScreen IEC Mix Pack, 5mL x 6 grades x 1 ea. (DEAE, SuperQ, QAE, CM, SP650, SP-550) 21400 ToyoScreen Column Holder 42194 ToyoScreen Column Holder with fittings
----------------------	---	--

Product Description

Toyopearl chromatographic resins are comprised of a methacrylic polymer incorporating high mechanical and chemical stability. Resins are available as non-functionalized "HW" series resins for size exclusion separations, and derivatized with surface chemistries for alternative modes of chromatography such as ion exchange, hydrophobic interaction or affinity separations.

Toyopearl SuperQ-650 chromatographic resins are designed for anion exchange chromatography. This chromatographic mode separates molecules on the basis of ionic interactions between the sample and the resin. The separation is usually accomplished in buffered aqueous solution with a gradient of increasing ionic strength. Alternatively, pH adjustment may be used for control of elution.

Formulation

72% (v/v) slurry in 20% (v/v) ethanol

This sheet contains the suggested operating conditions and specification ranges for Toyopearl SuperQ-650 resins. Lot-specific specifications are included in the Certificate of Analysis (C of A) shipped with the product.

A. OPERATING CONDITIONS

Pressure Drop Across the Column	max. 3 bar (recommended)
Operating Linear Flow Rate	normally 10 – 600 cm/hour (depending on particle size)
Cleaning in Place/Sanitization	0.1mol/L NaOH or 0.1mol/L HCl
Long Term Storage Conditions	20% (v/v) ethanol (shipping solvent)

B. SPECIFICATIONS

Appearance	White resin slurry which settles upon standing
Particle Size Distribution (>80% within range)	20 – 50µm for S-grade 40 – 90µm for M-grade 50 – 150µm for C-grade
Mean Pore Diameter (base resin)	1000Å
Exclusion Limit (base resin)	2.5 x 10 ⁵ Dalton (globular protein)
Ion Exchange Capacity	0.25 ± 0.05 meq/mL
Protein Adsorption Capacity	130 ± 25 mg/mL (Bovine Serum Albumin)
Bacterial Count	≤ 100 CFU/mL
Endotoxin Concentration	≤ 10.0 endotoxin units/mL
Resin Volume per Container	The indicated volume is the settled resin volume.
Foreign Substance	not observed, no visual evidence
Eluable Matter	≤ 0.2%
Shelf Life Stability	Minimum 10 years

RDS1090_MAY2009

Denmark

MD Scientific is authorized distributor in
Denmark for Tosoh Bioscience

www.md-scientific.dk - info@md-scientific.dk - Tel. 7027 8565

www.tosohbioscience.com

Tosoh Bioscience GmbH

Zettachring 6

D-70567 Stuttgart

Germany

Phone: 0711/13257 0