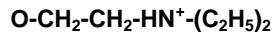


# TSK-GEL® DEAE-5PW Resins

(weak anion exchange chromatography resins)


**G5000-PW**


<b>Part Numbers:</b>	<b>43381</b>	<b>TSKgel DEAE-5PW (20), 25mL</b>
	<b>14710</b>	<b>TSKgel DEAE-5PW (20), 250mL</b>
	<b>14711</b>	<b>TSKgel DEAE-5PW (20), 1L</b>
	<b>18436</b>	<b>TSKgel DEAE-5PW (20), 5L</b>
	<b>43281</b>	<b>TSKgel DEAE-5PW (30), 25mL</b>
	<b>14712</b>	<b>TSKgel DEAE-5PW (30), 250mL</b>
	<b>14713</b>	<b>TSKgel DEAE-5PW (30), 1L</b>
	<b>18370</b>	<b>TSKgel DEAE-5PW (30), 5L</b>

**Product Description**

TSK-GEL chromatographic resins are comprised of a methacrylic polymer incorporating high mechanical and chemical stability. Resins are available as non-functionalized "G-PW" series resins for size exclusion separations, and derivatized with surface chemistries for alternative modes of chromatography such as ion exchange, hydrophobic interaction or affinity separations.

TSK-GEL DEAE-5PW chromatographic resins are designed for anion exchange chromatography. This chromatographic mode separates molecules on the basis of ionic interactions between the sample and the resin. The separation is usually accomplished in buffered aqueous solution with a gradient of increasing ionic strength. Alternatively, pH adjustment may be used for control of elution.

**Formulation**

72% (v/v) slurry in 20% (v/v) ethanol

This sheet contains the suggested operating conditions and specification ranges for TSK-GEL DEAE-5PW resins. Lot-specific specifications are included in the Certificate of Analysis (C of A) shipped with the product.

**A. OPERATING CONDITIONS**

Pressure Drop Across the Column	max. 20 bar (recommended)
Operating Linear Flow Rate	normally 60 – 1200 cm/hour (depending on particle size)
Cleaning in Place/Sanitization	0.5mol/L NaOH or 0.1mol/L HCl
Long Term Storage Conditions	20% (v/v) ethanol (shipping solvent)

**B. SPECIFICATIONS**

Appearance	White resin slurry which settles upon standing
Particle Size Distribution (>80% within range)	15 – 25µm for TSK-GEL DEAE-5PW (20) resins 20 – 40µm for TSK-GEL DEAE-5PW (30) resins
Mean Pore Diameter	1000Å
Exclusion Limit (base resin)	5 x 10 <sup>6</sup> Dalton (globular protein)
Ion Exchange Capacity	0.08 ± 0.03 meq/mL
Protein Adsorption Capacity	35 ± 10 mg/mL (Bovine Serum Albumin) for TSK-GEL DEAE-5PW (20) resins 30 ± 10 mg/mL (Bovine Serum Albumin) for TSK-GEL DEAE-5PW (30) resins
Bacterial Count	≤ 100 CFU/mL
Endotoxin Concentration	≤ 10.0 endotoxin units/mL
Resin Volume per Container	The indicated volume is the settled resin volume.
Foreign Substance	not observed, no visual evidence
Eluable Matter	≤ 0.2%
Shelf Life Stability	Minimum 10 years

RDS1100\_MAY2009

**Denmark**

MD Scientific is authorized distributor in  
Denmark for Tosoh Bioscience

www.md-scientific.dk - info@md-scientific.dk - Tel. 7027 8565

www.tosohbioscience.com

Tosoh Bioscience GmbH

Zettachring 6

D-70567 Stuttgart

Germany

Phone: 0711/13257 0